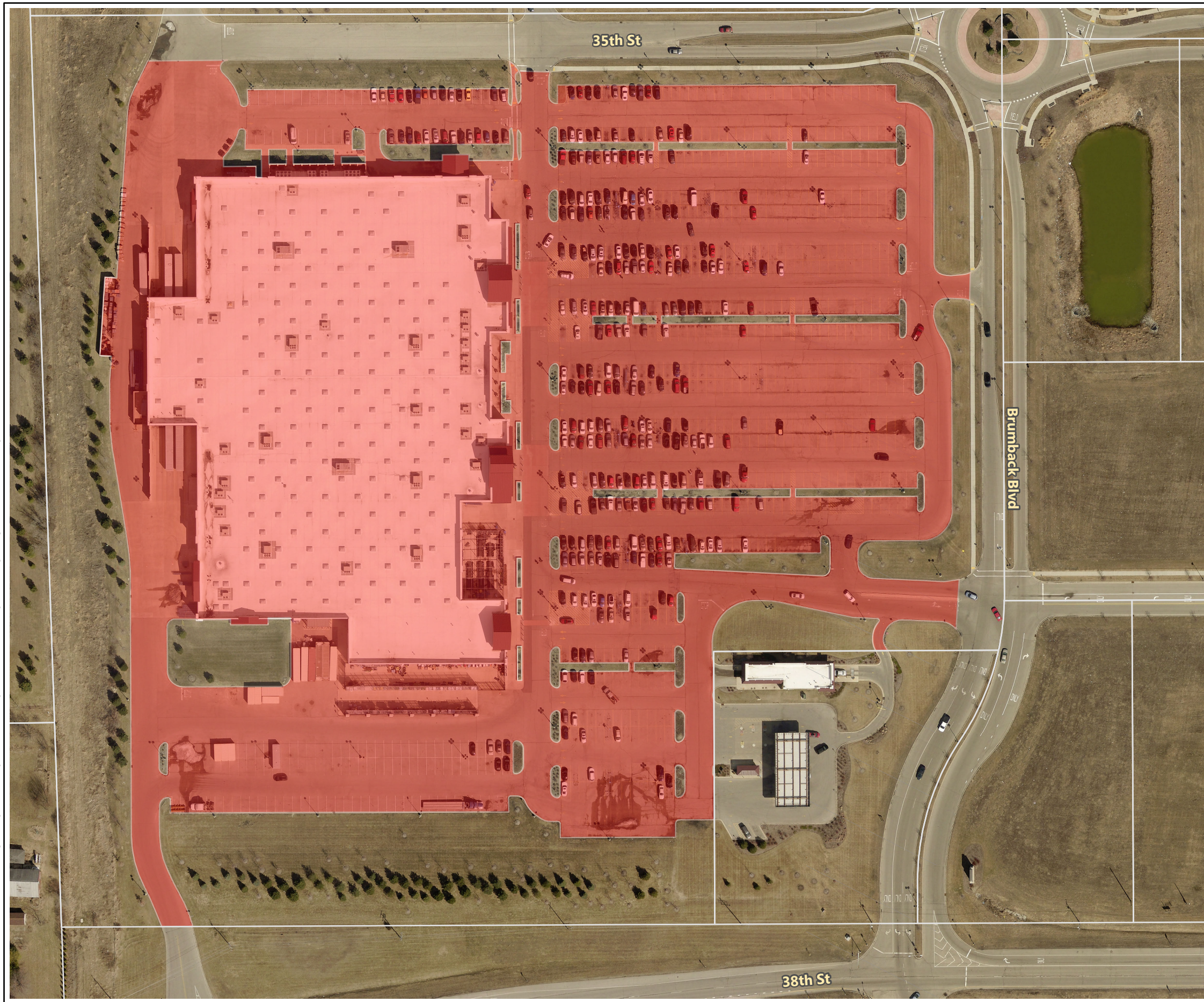


Path: X:\SOMEV\170066 Storm Water Utility Development\GIS\Projects\StormwaterImprovements.aprx Layout: ERU Calculation Map Author: 563dks Save Date: 1/8/2018 1:14 PM



Parcel Number: 82-4-222-271-0301

Zoning: Business

Parcel Area: 1,080,84sqft

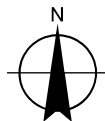
Impervious Area: 713,462sqft

ERU's: 142.7 ERU
(713,462sqft / 5,000sqft/ERU)

Yearly Fee: \$6,181.76
(142.7 ERU x \$43.32/ERU)

Quarterly Fee: \$1,545.44
(142.7 ERU x \$10.83/ERU)

Note: This is a large parcel with a lot of impervious area.



BAXTER & WOODMAN
Consulting Engineers

January 5, 2018
P.N. 170066

Impervious Area

ERU CALCULATION SAMPLE
STORMWATER UTILITY

Village of Somers, WI